

PERA PALACE HOTEL
1892



Istanbul is...

The capital of 3 Empires for over 1700 years.

A melting pot of many cultures

Only city in the world connects two continents; Europe & Asia

Unites Eastern & Western worlds

A shoppers paradise & a heaven for foodies

Hip and trendy



Istanbul in pictures...



Galata Tower



Old City is 3 km away



Maiden Tower in the middle of two continents



Istiklal Street – Most popular pedestrian street parallel to Pera Palace Hotel Jumeirah



Ortakoy Mosque and Bosphorus Bridge

Istanbul - Shopping Capital of Turkey



Nisantasi- A high end shopping & dining district



Kanyon Shopping Mall



Zorlu Center Shopping Mall



Istinye Park Shopping Mall

Grand Bazaar & Egyptian Market



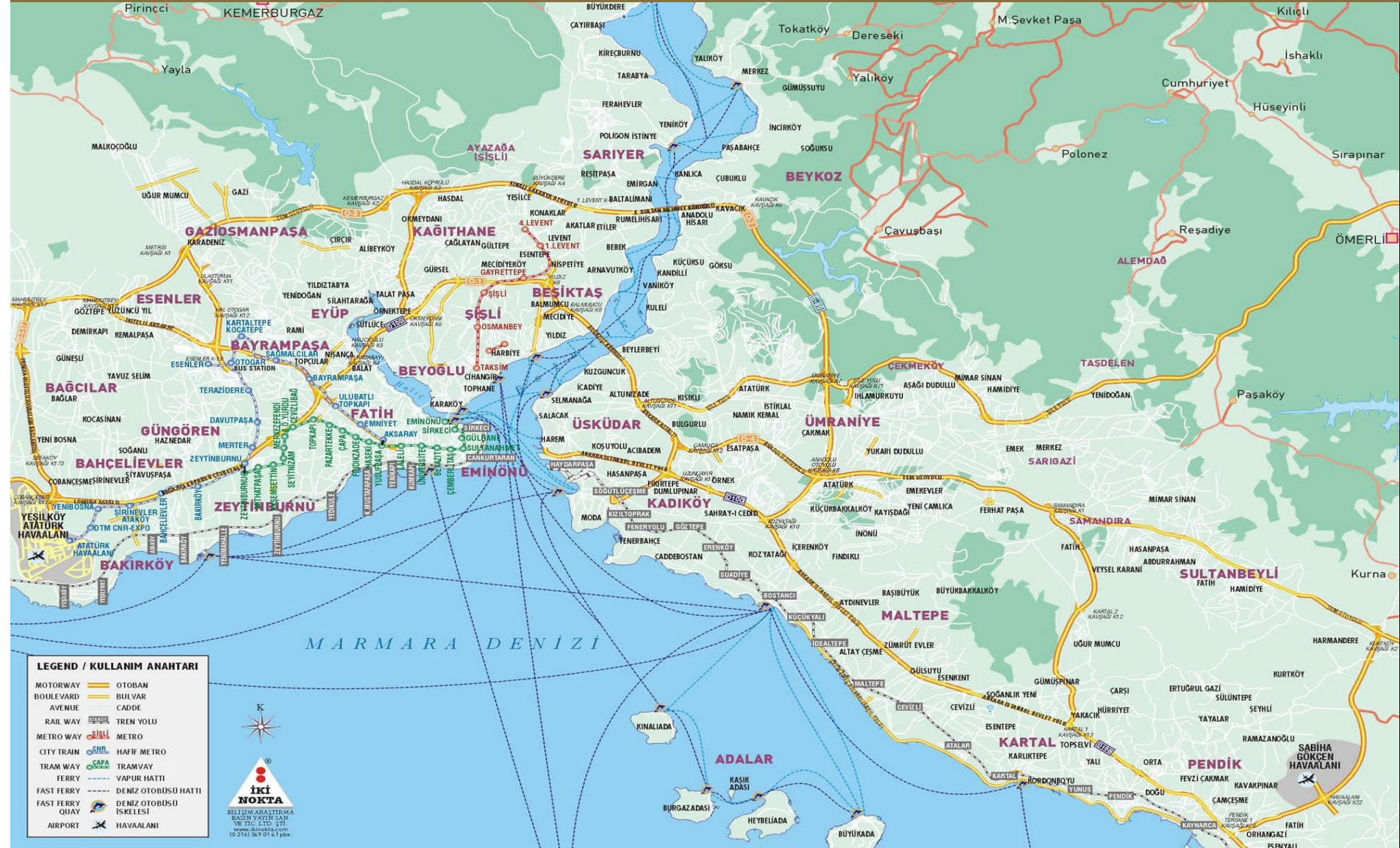
Dining & Entertainment





PERA PALACE HOTEL
1892

Location of Pera Palace Hotel



Location of Pera Palace Hotel



Located in the city center in the historic Pera district; the cultural and intellectual center of Istanbul today with a great selection of Istanbul's finest bars and restaurants.

19 km to Ataturk International Airport,

2.4 km to Old City; Blue Mosque, Hagia Sophia and Topkapi Palace

1.5 km to the cruise harbor

0.1 km to the famous Istiklal Street for shopping and dining.

Easy access to main transportation points like harbors, subway, ferries..

Pearl of Istanbul

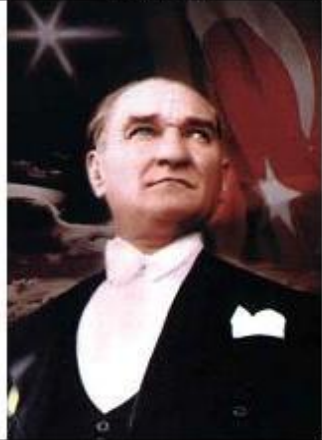


Welcome to Pera Palace Hotel



A prestigious hostess...

Atatürk



Agatha Christie



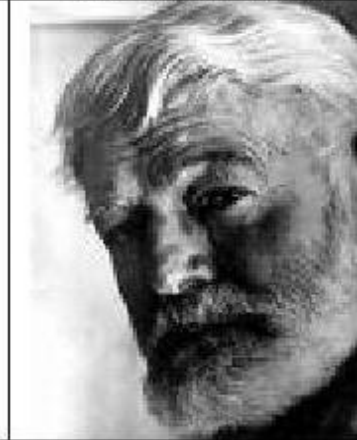
General Franz von Papen.



Alfred Hitchcock



Ernest Hemingway



Sarah Bernhardt



Mata Hari



Greta Garbo



Jacqueline Onassis



King Edward VIII



Ever since its first days in the 1890's, the Pera Palace Hotel hosted iconic guests, among which were historical figures, kings, queens, statesmen and world-famous artists.

Lobby



Historical Elevator



Pera Palace

Iconic historical elevator which is installed just 3 years after the first elevator of Europe at Eiffel Tower in 1889



PERA PALACE HOTEL
1892

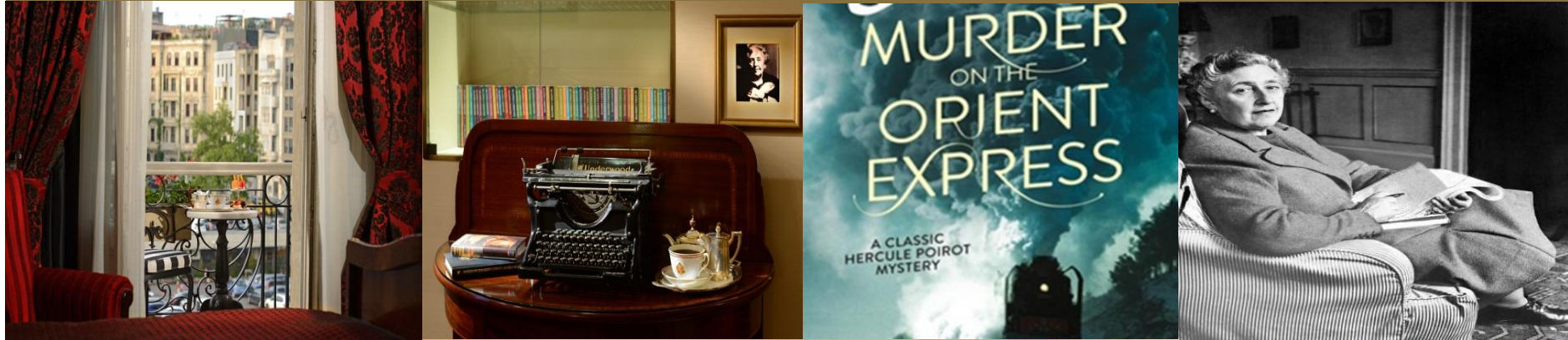
Deluxe Rooms (30 sqm) with Pera & Golden Horn views



Greta Garbo Corner Rooms (45 sqm)



Agatha Christie Room - 411 (45 sqm)



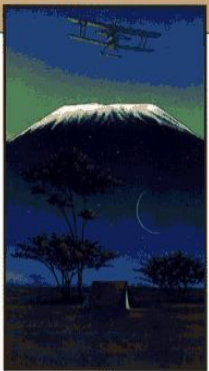
Agatha Christie was a regular guest at the Pera Palace Hotel between 1926 and 1932 and the "Murder on the Orient Express" was allegedly written in room 411.

A wide collection of Agatha Christie novels in several different languages are available.

Ernest Hemingway Suites (55 sqm)



Ernest
HEMINGWAY



THE SNOWS OF KILIMANJARO

And Other Stories



Pierre Loti Suites (52 sqm)



Senior Suites (Inonu and Bayar Suites) - (65 sqm)



Presidential Suites (King Edward VIII & Franz Joseph Suites) (115 sqm)



Kubbeli Tea Lounge



High Tea at Kubbeli Tea Lounge



Library Room



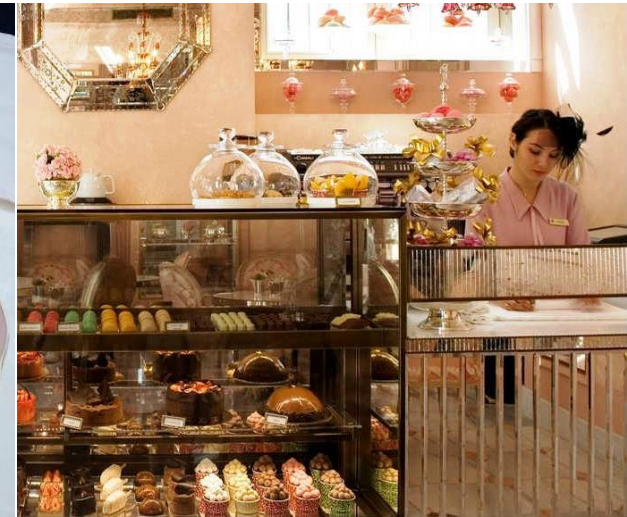
Agatha Restaurant



The Agatha Restaurant pays tribute to the three major stops of the former Orient Express; Paris, Venice and Istanbul.

By serving a combination of French, Italian and Turkish cuisine, Agatha combines traditional Turkish ingredients with international cooking techniques.

Patisserie de Pera



Conference and Event Rooms





PERA PALACE HOTEL
1892

Historical Grand Pera Ballroom (212 sqm)



Grand Pera Ballroom



Pasha Room (89 sqm)



Aynali Room (65 sqm)



Galata I Meeting Room



Galata Meeting Room (215 sqm)

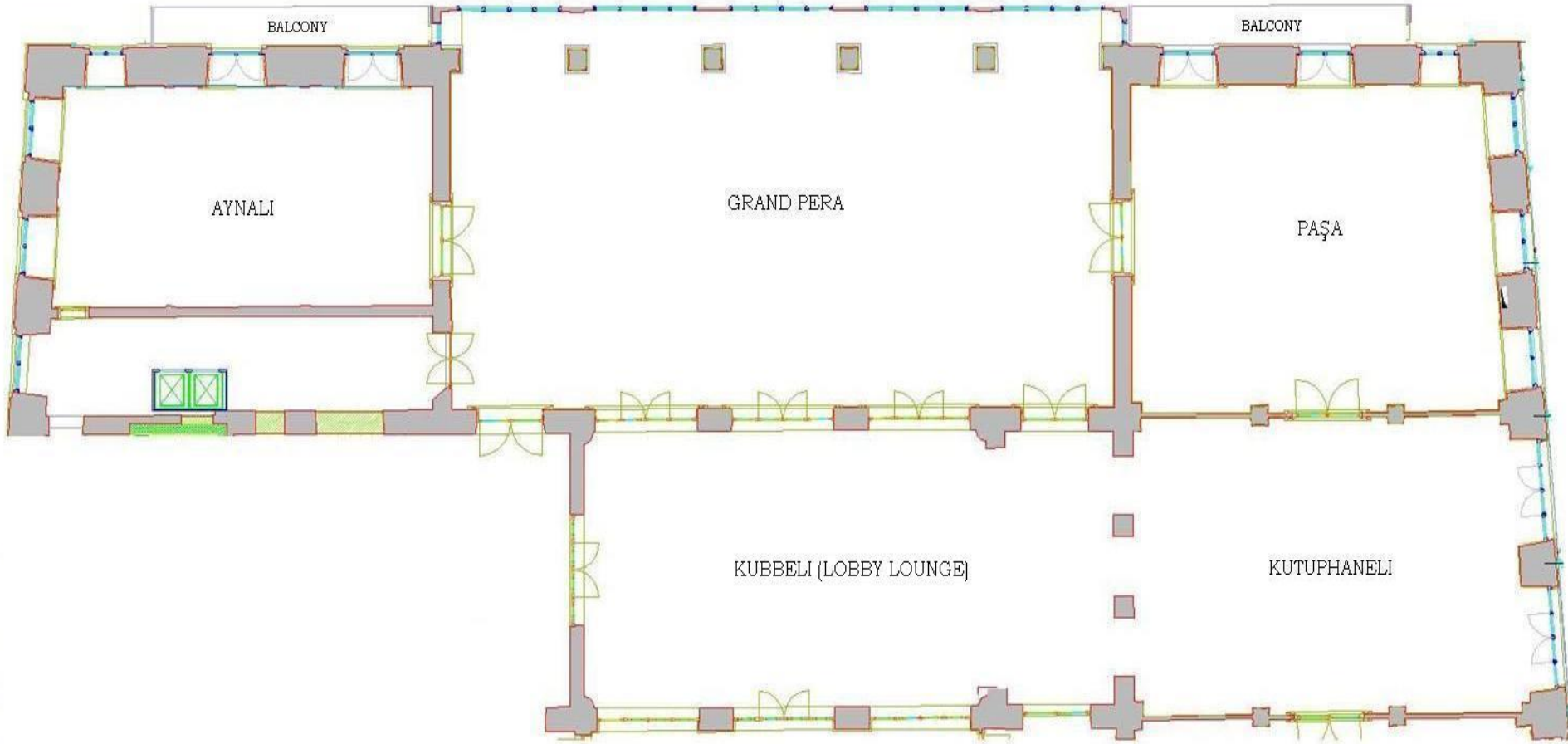


Galata Meeting Room with daylight foyer and can be divided into 3 sections (215 sqm)

CAPACITY CHART

MEETING ROOM	m2	sqf	Theatre	Classroom	U-Shape	Hollow Square	Boardroom	Cocktail	Cocktail Prolounge	Gala Dinner	Dine & Dance
Grand Pera Ballroom	212	2281	224	132	57	66	68	190	150	150	120
Pasha Room	90	960	70	36	29	34	34	90	60	45	
Aynalı Room	65	700	80	36	29	34	34	70	60	60	
Kubbeli Saloon	116	1248						130	100	80	
Grand Pera + Aynalı Rooms	277	2979						260	200	195	165
Grand Pera+Pasha Rooms	301	3241						280	210	195	165
Grand Pera+Aynalı+Pasha Rooms	366	3940						350	260	240	210
Grand Pera+Aynalı+Kubbeli Rooms	393	4228						390	300	275	245
Grand Pera+Pasha+Kubbeli Rooms	417	4490						410	310	275	245
Grand Pera+Kubbeli Rooms	328	3529						320	250	230	200
Grand Pera+Kubbeli+Aynalı+Pasha Rooms	482	5188						480	360	320	290
Galata Room	215	2316	340	132	60	72	72	240	180	180	150
Galata I	41	439	36	24	19	24	18	50	35	30	
Galata II	54	576,2	42	36	20	26	24	65	45	40	
Galata III	54	576,2	42	36	20	26	24	65	45	40	
Galata Foyer	110	1184						90	70		
Agatha PDR							12				

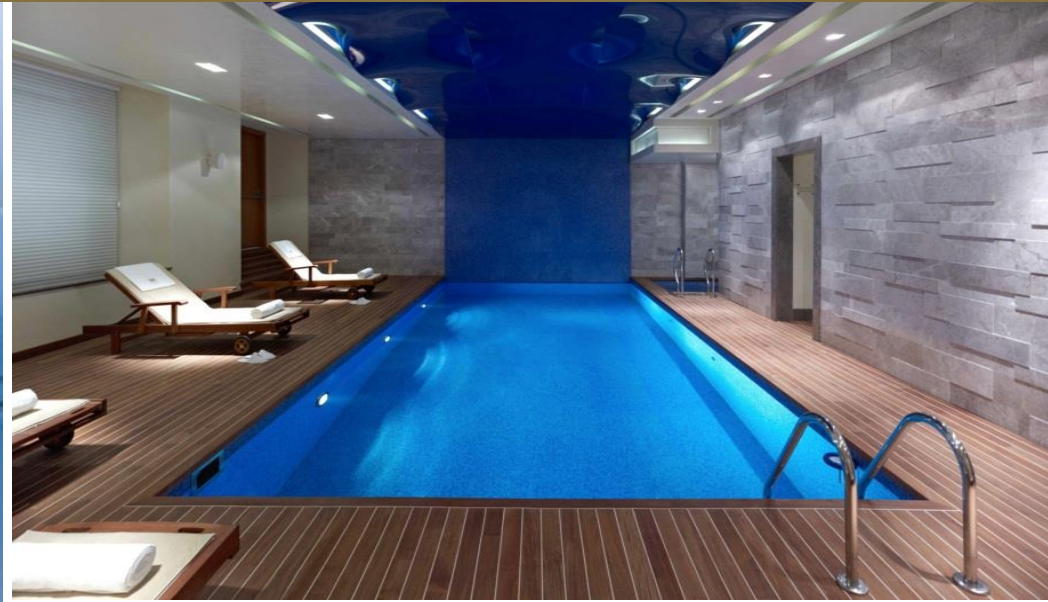
FLOOR PLAN



Orient Terrace



Pera Spa by Spa Soul (380 sqm)





PERA PALACE HOTEL
1892

Thank You

www.perapalace.com